

2024 MID-YEAR PROGRESS REPORT

The systemic factors driving homelessness are stronger than ever, and forcing more of our community members onto the streets and into shelters every day. The 2020-2025 Community Plan to End Homelessness guides our community's collective work to reverse the current growth in homelessness and bring us closer to our goal of ending homelessness in Santa Clara County. We are forging new partnerships, changing systems, and investing strategically to accomplish meaningful progress, however, we must continue to scale up these effective solutions to reduce overall homelessness in our community. To learn more visit destinationhomesv.org/community-plan

OUR GUIDING STRATEGIES:



STRATEGY 1

Address the root causes of homelessness through system and policy change



STRATEGY 2

Expand homelessness prevention and housing programs to meet the need



STRATEGY 3

Improve quality of life for unsheltered individuals and create healthy neighborhoods for all

OUR PROGRESS TO DATE



15,810

People Housed

2025 goal: 20,000 People Housed



24% Increase in

**New Households
Becoming Homeless
in 2023**

SYSTEM PERFORMANCE



15,810

People
Connected
to Stable
Housing



21,425

People
Placed in
Temporary
Housing & Shelter



30,868*

People
Received
Homelessness
Prevention Assistance

*includes people served via Covid-related Financial Assistance

In 2023,



For every
1 household
housed



another
1.7 become
homeless

KEY INITIATIVES

BUILDING MORE PERMANENTLY AFFORDABLE HOUSING

Our community is aligning public resources — like the Measure A housing bond, Housing Authority vouchers and San Jose's Measure E transfer tax — and private funds from partners such as Cisco and Apple, to spur 56 deeply affordable and supportive housing developments.



More than
5,800 homes
are open, under
construction or
in the pipeline

PREVENTING HOMELESSNESS

Launched as a pilot seven years ago, a broad public-private partnership has expanded the countywide Homelessness Prevention System to serve more than 2,500 households a year, by providing at-risk households with relatively small amounts of money and key support services.



96% of households
remained stably
housed while
enrolled

DEPLOYING NEW SHELTER MODELS

Local jurisdictions are embracing new emergency and interim shelter models - like modular developments, tiny homes and hotel conversions - to quickly provide dignified shelter for people on their path to permanent housing. Hundreds of additional units are in development.



Shelter
options have
grown **53%**
since 2020

ENDING FAMILY HOMELESSNESS

In 2021, partners launched the HEADING HOME campaign to end family homelessness. Leveraging federal emergency housing vouchers and other resources, the campaign has enrolled all eligible families with children in a housing program.



More than
1,700 families
connected to
permanent
housing

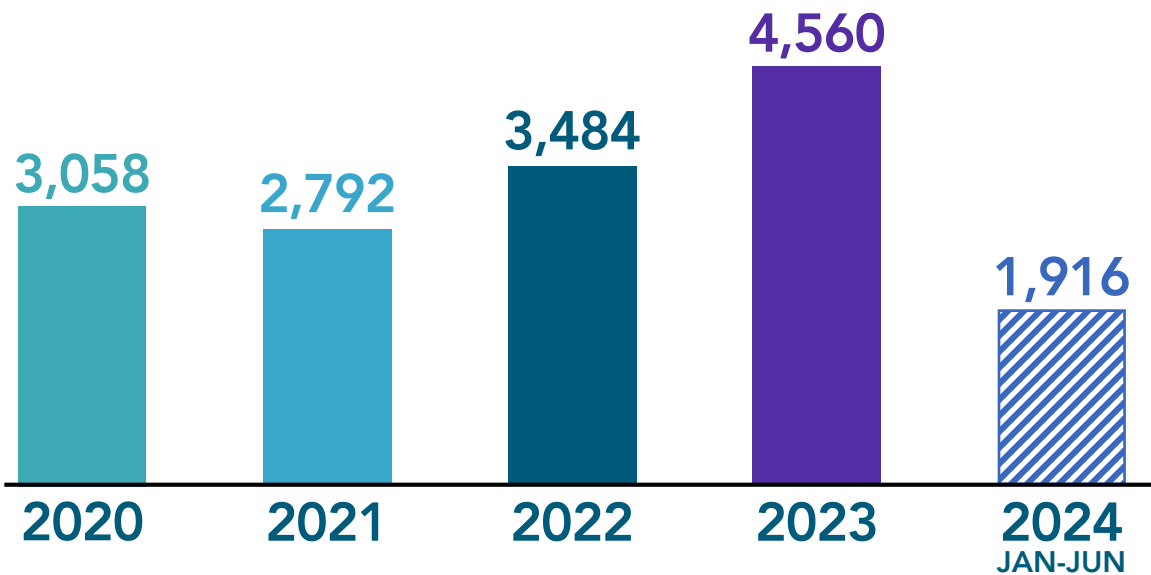
2024 MID-YEAR PROGRESS REPORT



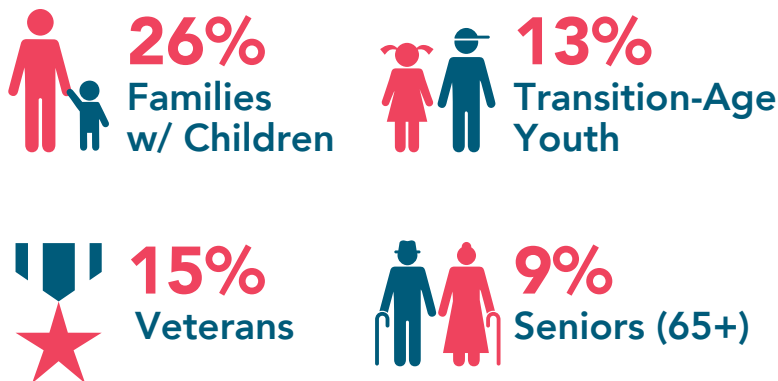
15,810 People Housed

2025 goal: 20,000 People Housed

PEOPLE HOUSED BY YEAR



KEY SUB-POPULATIONS



*Based on number of households housed



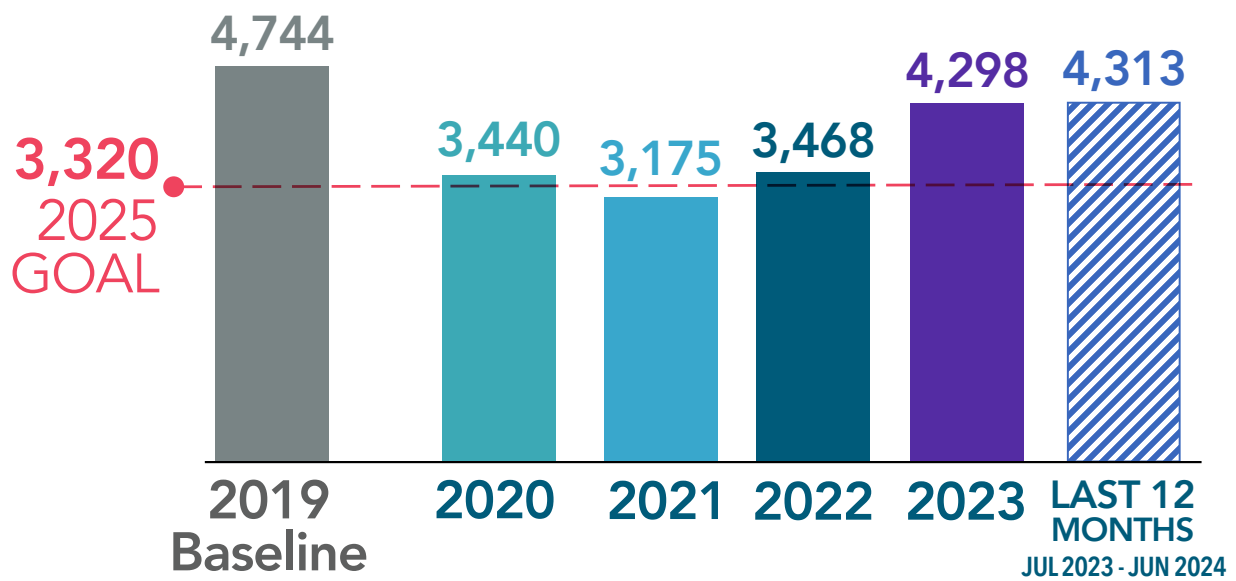
80% have a San José affiliation

2024 MID-YEAR PROGRESS REPORT



24% Increase in New Households Becoming Homeless in 2023

NEW HOUSEHOLDS ENTERING HOMELESSNESS BY YEAR



WHO IS SEEKING HELP?



21%
Families w/ Children



5%
Seniors (65+)



18%
Transition-Age Youth



3%
Veterans

2024 MID-YEAR PROGRESS REPORT

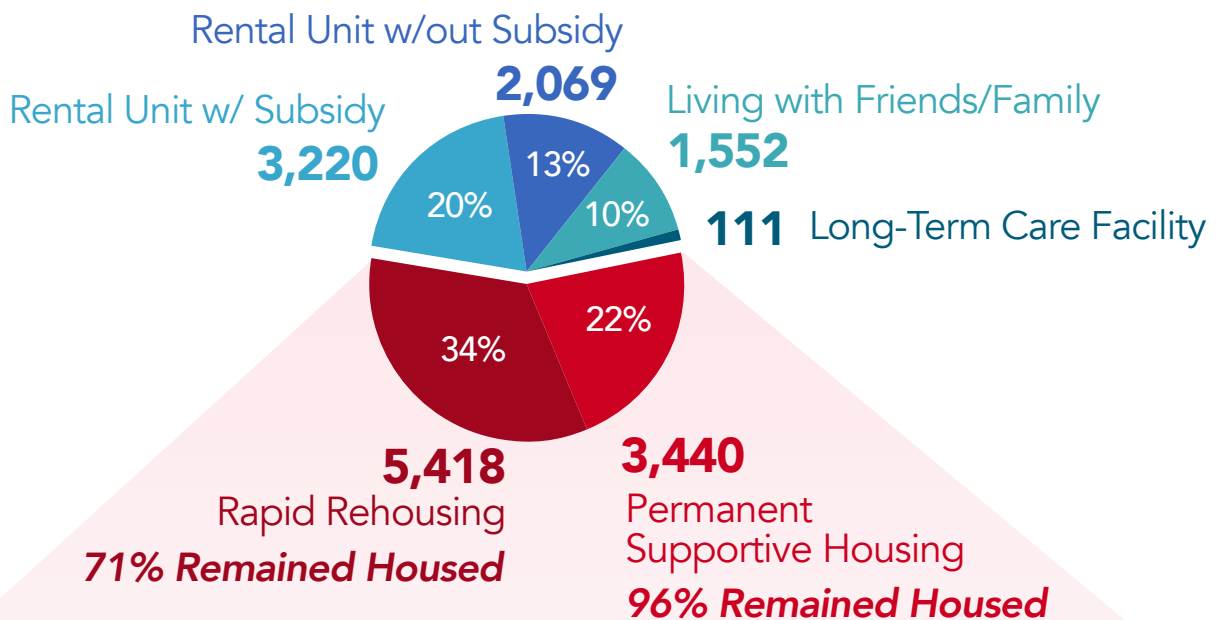


SYSTEM PERFORMANCE

Permanent Housing

PEOPLE ASSISTED

15,810 People Connected to Stable Housing



EXPANDING OUR SYSTEM

Supportive Housing Capacity*

5,748 units/subsidies

↑ 15% since Jan. 1, 2020

1,057 units in the pipeline

*Includes Rapid Rehousing & Permanent Supportive Housing

Data reflects progress from Jan. 1, 2020 - June. 30, 2024

2024 MID-YEAR PROGRESS REPORT



SYSTEM PERFORMANCE

Temporary Housing & Shelter

PEOPLE ASSISTED

21,425 People Placed in Temporary Housing & Shelter

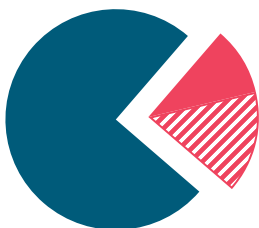
EXPANDING OUR SYSTEM

Temporary Housing & Shelter Capacity



Breakdown by Type

1,416	725	328	267
Shelter	Interim Housing	Other Transitional Housing Programs	Safe Parking
Utilization Rates			
80%	89%	84%	77%



In FY24, **24% of all people** served in temporary housing and shelter exited to **permanent housing**.

62% of those, did so with the help of subsidized housing (rental/own with subsidy).

2024 MID-YEAR PROGRESS REPORT



SYSTEM PERFORMANCE Homelessness Prevention

PEOPLE ASSISTED

30,868 People Received Homelessness Prevention Assistance



96% of families remained stably housed while receiving services.



ONE YEAR LATER

Only 6% of households became homeless.

EXPANDING OUR SYSTEM

Homelessness Prevention Capacity

2,547 households

↑ 65% since Jan. 1 2020

Goal to reach **2,500 households**

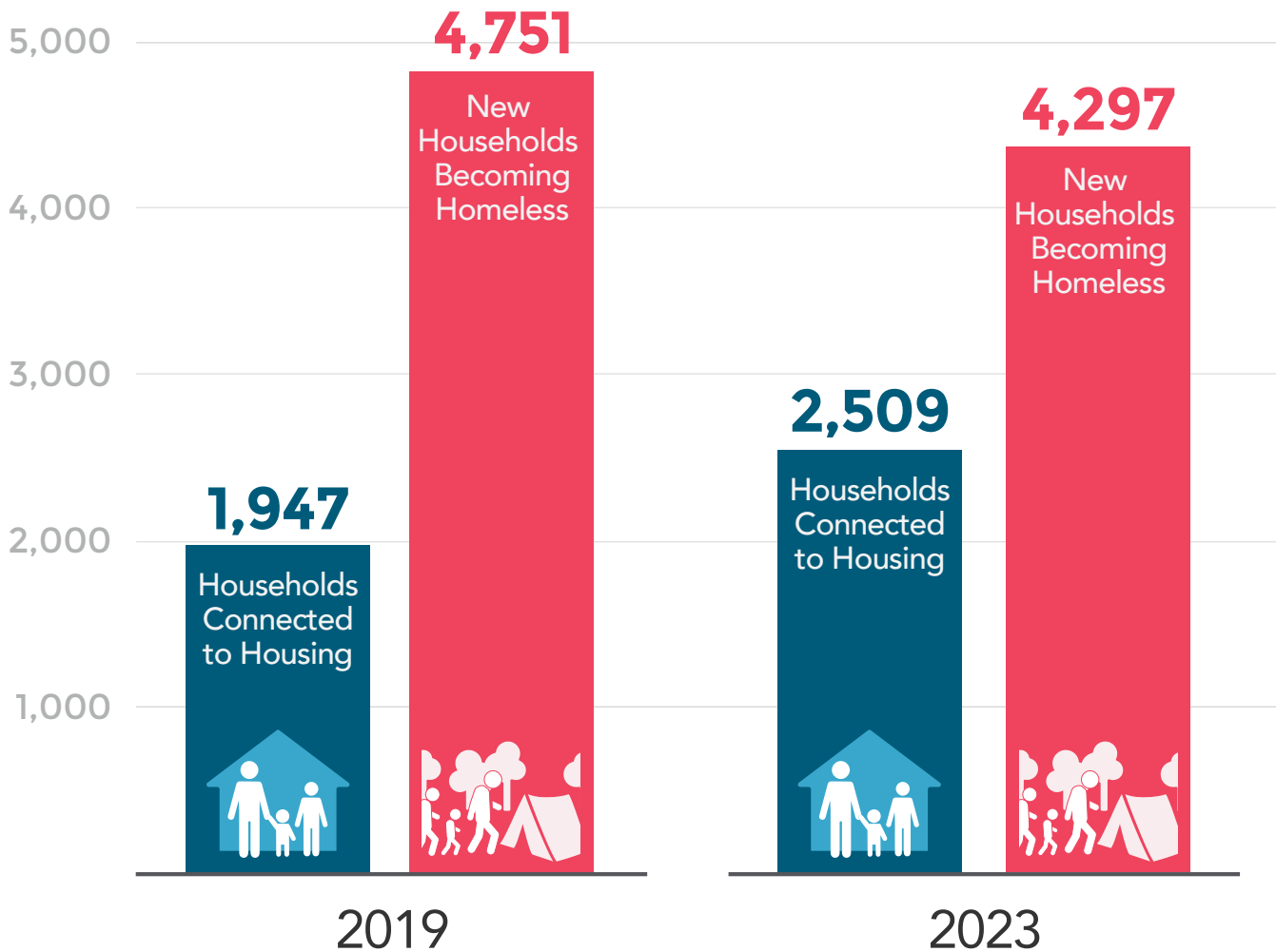
2024 MID-YEAR PROGRESS REPORT

NARROWING THE GAP TO 'FUNCTIONAL ZERO'

Households Connected to Housing

VS

New Households Becoming Homeless



For every **1** household housed, another **2.5** became homeless

For every **1** household housed, another **1.7** became homeless