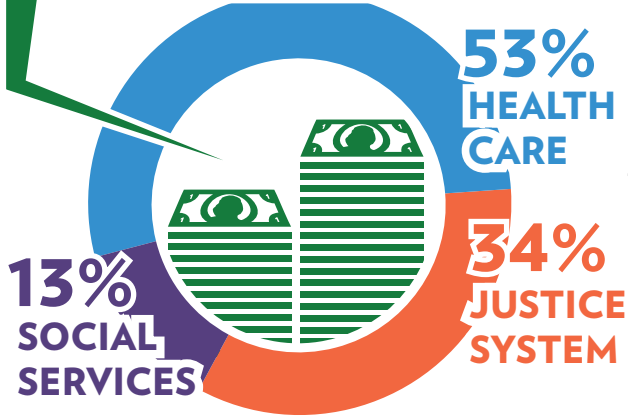


THE LARGEST & MOST COMPREHENSIVE COST STUDY OF HOMELESSNESS IN THE USA

104,206 individuals in Santa Clara County over 6 years - between 2007 and 2012

\$520 MILLION / YEAR
providing services for homeless residents over the six-year study



- 54%+** Outpatient Health Care
- 14%** Inpatient Health Care
- 27%+** Emergency Room
- 13%** Drug & Alcohol Rehab
- 17%** Mental Health
- 6%** Emergency Psychiatric Services

1/3 of study population was involved with the criminal justice system Among this group:

- 1/3** Charged with Felonies
- 1/2** Charged with Misdemeanors
- 1/5** Charged with Infractions
- 1/3** Charged with Drug Offenses

TOP 5% 2,290 individuals with costs in the TOP 5% accounted for **47%** of all costs and had average costs of over **\$100,000/YEAR**.

TOP 10% 4,582 individuals with costs in the TOP 10% accounted for **61%** of all costs and had average costs of **\$67,199/YEAR**.

HOMELESS FOSTER YOUTH



80% Mental Disorder

63% Involved in Justice System

IMMIGRANTS



Immigrants only account for **9%** of the TOP 5%.

HOUSING 1000



Pre-housing
\$62,473



Post-housing
\$19,767

=



Reduction of
\$42,706

For the 103 homeless residents in the tenth cost decile who were housed through **Housing 1000** program, the estimated average annual pre-housing public cost was **\$62,473**. The estimated average post-housing cost was **\$19,767**, a reduction of **\$42,706** annually.

GENDER



Santa Clara County

National Data

Santa Clara County shows equal numbers of homeless males and females & more females in persistent homelessness. National data, shows two or three times as many males homeless as females.

SOLUTIONS

- Invest in Homelessness Prevention
- Expand Local Rapid Re-housing Programs
- Build Permanent Supportive Housing & Create New Housing Opportunities

Source:
Home Not Found: The Cost Of Homelessness In Silicon Valley
To read the full report visit destinationhomesc.org/#coststudy



To find out more visit:
DESTINATIONHOMESV.ORG