

THE 2020-2025 COMMUNITY PLAN TO END HOMELESSNESS

2022 YEAR-END PROGRESS REPORT

The systemic factors driving homelessness are stronger than ever, and forcing more of our community members onto the streets and into shelters every day. The 2020-2025 Community Plan to End Homelessness guides our community's collective work to reverse the current growth in homelessness and bring us closer to our goal of ending homelessness in Santa Clara County. We are forging new partnerships, changing systems, and investing strategically to accomplish meaningful progress, however, we must continue to scale up these effective solutions to reduce overall homelessness in our community. To learn more visit destinationhomesv.org/community-plan

OUR GUIDING STRATEGIES:



STRATEGY 1

Address the root causes of homelessness through system and policy change



STRATEGY 2

Expand homelessness prevention and housing programs to meet the need



STRATEGY 3

Improve quality of life for unsheltered individuals and create healthy neighborhoods for all

OUR PROGRESS TO DATE



9,645

People Housed

48% to 2025 goal (20,000)



27% Reduction in New Households Becoming Homeless

On track to hit 2025 goal (30%)

SYSTEM PERFORMANCE



*includes people served via Covid-related Financial Assistance



For every 1 household housed



another 1.7 become homeless

KEY INITIATIVES

BUILDING MORE PERMANENTLY AFFORDABLE HOUSING

Our community is aligning public resources — like the Measure A housing bond, Housing Authority vouchers and San Jose's Measure E transfer tax — and private funds from partners such as Cisco and Apple, to spur 47 deeply affordable and supportive housing developments.



Approx. 5,000 homes are open, under construction or in the pipeline

PREVENTING HOMELESSNESS

Launched as a pilot five years ago, a broad public-private partnership has expanded the countywide Homelessness Prevention System to serve more than 2,100 households a year, by providing at-risk households with relatively small amounts of money and key support services.



97% of households remained stably housed while enrolled

DEPLOYING NEW SHELTER MODELS

Local jurisdictions are embracing new emergency and interim shelter models - like modular developments, tiny homes and hotel conversions - to quickly provide dignified shelter for people on their path to permanent housing. Hundreds of additional units are in development.



Shelter options have grown 15% since 2020

ENDING FAMILY HOMELESSNESS

In 2021, partners launched the HEADING HOME campaign to end family homelessness. Leveraging federal emergency housing vouchers and other resources, the campaign has enrolled all eligible families with children in a housing program.



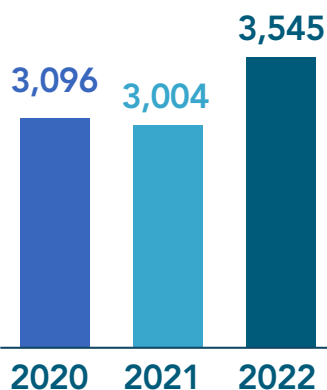
635 families connected to permanent housing



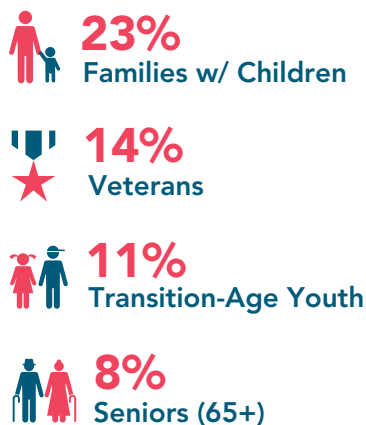
9,645 People Housed

48% to 2025 goal (20,000)

PEOPLE HOUSED BY YEAR



KEY SUB-POPULATIONS



*Based on number of households housed



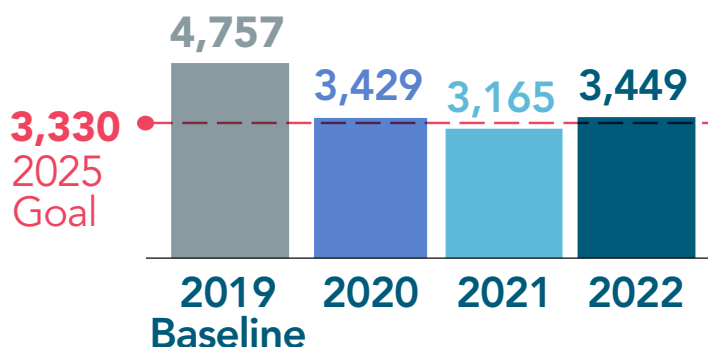
84%
have a
San José
affiliation



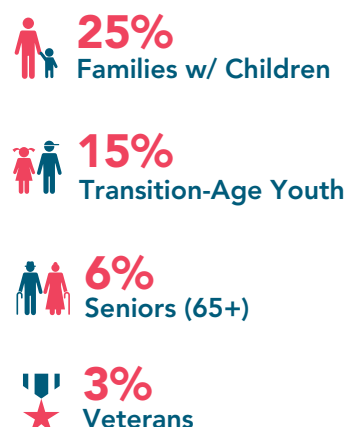
27% Reduction in New Households Becoming Homeless

On track to hit 2025 goal (30%)

NEW HOUSEHOLDS ENTERING HOMELESSNESS BY YEAR



WHO IS SEEKING HELP?



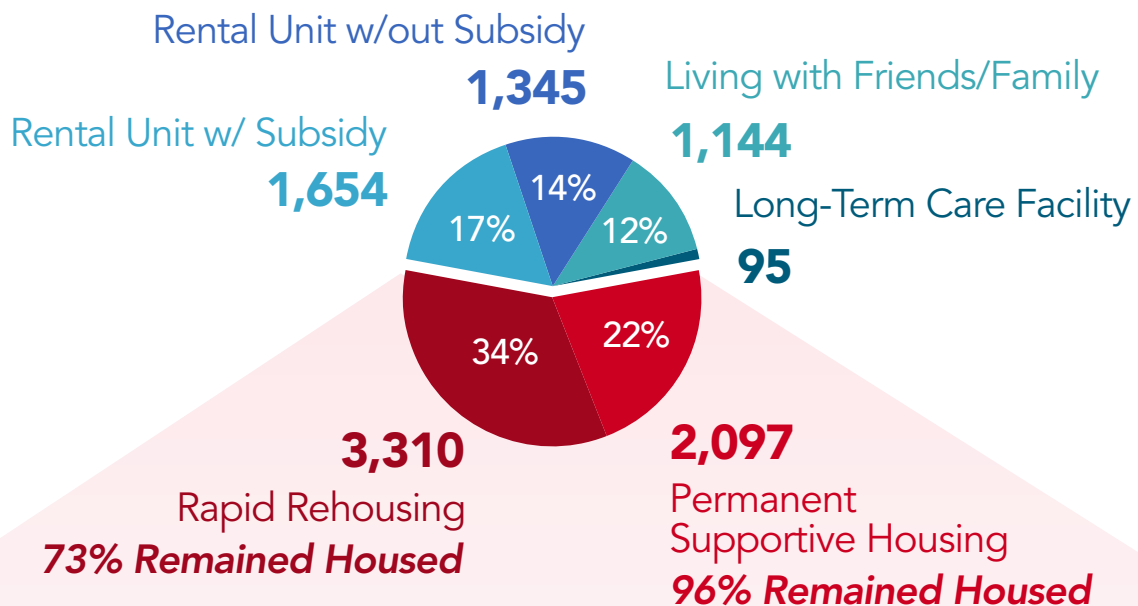


SYSTEM PERFORMANCE

Permanent Housing

PEOPLE ASSISTED

9,645 People Connected to Stable Housing



EXPANDING OUR SYSTEM

Supportive Housing Capacity*

5,603 units/subsidies

↑15% since Jan. 1 2020

1,334 units in the pipeline

*Includes Rapid Rehousing & Permanent Supportive Housing



SYSTEM PERFORMANCE

Temporary Housing & Shelter

PEOPLE ASSISTED

15,124 People Placed in
Temporary Housing & Shelter

EXPANDING OUR SYSTEM

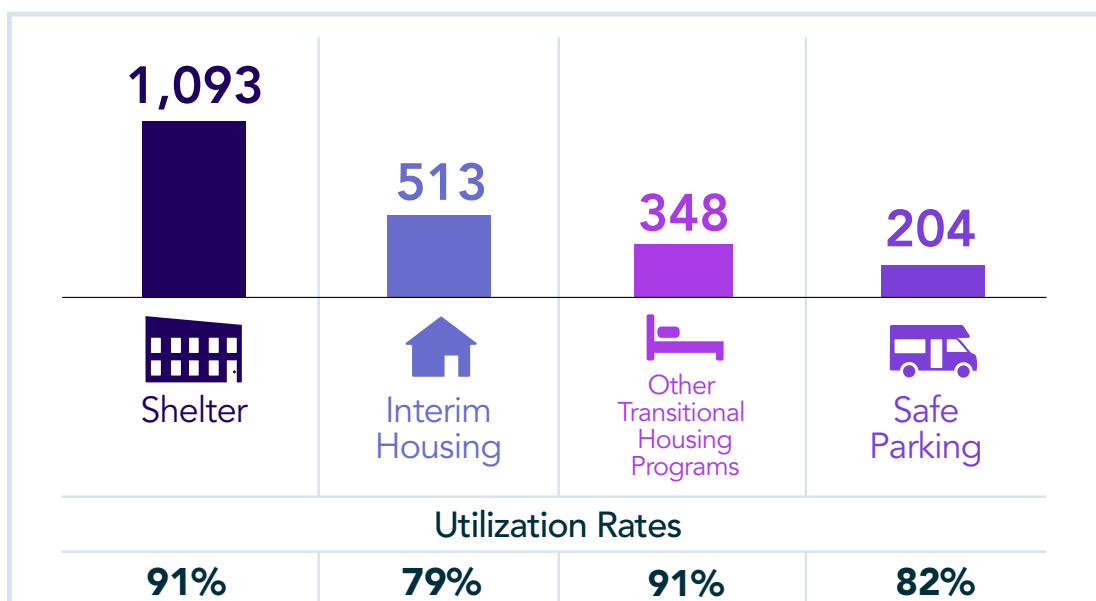
Temporary Housing & Shelter Capacity

2,158 units

↑15% since Jan. 1 2020

384 units in the pipeline

Breakdown by Type

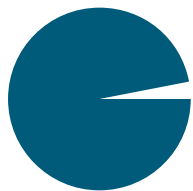




SYSTEM PERFORMANCE Homelessness Prevention

PEOPLE ASSISTED

23,970 People Received
Homelessness Prevention Assistance



97% of families
remained stably
housed while
receiving services.



ONE YEAR LATER

→
Only 3%
of households
became homeless.

EXPANDING OUR SYSTEM

Homelessness Prevention Capacity

2,161 households

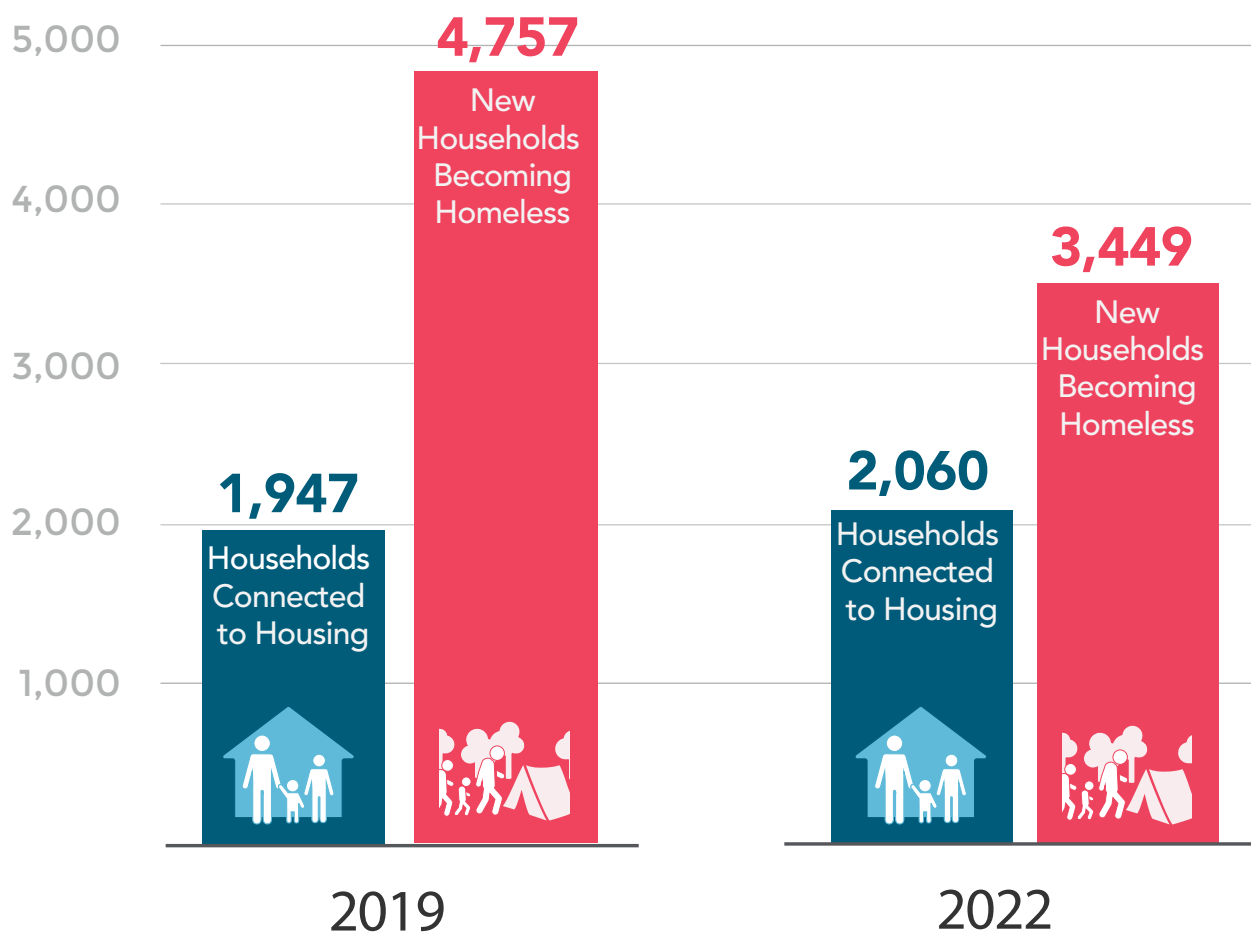
↑ 40% since Jan. 1 2020

Plans to reach **2,500 households**

*Total people assisted includes those served via temporary COVID-related financial assistance; outcome stats are for ongoing Homelessness Prevention programs only

NARROWING THE GAP TO 'FUNCTIONAL ZERO'

Households Connected to Housing VS New Households Becoming Homeless



For every **1** household housed,
another **2.5** became homeless

For every **1** household housed,
another **1.7** became homeless