

# 2024 YEAR-END PROGRESS REPORT

The systemic factors driving homelessness are stronger than ever, and forcing more of our community members onto the streets and into shelters every day. The 2020-2025 Community Plan to End Homelessness guides our community's collective work to reverse the current growth in homelessness and bring us closer to our goal of ending homelessness in Santa Clara County. We are forging new partnerships, changing systems, and investing strategically to accomplish meaningful progress; however, we must continue to scale up these effective solutions to reduce overall homelessness in our community. To learn more, visit [destinationhomesv.org/community-plan](https://destinationhomesv.org/community-plan)

## OUR GUIDING STRATEGIES:



### STRATEGY 1

Address the root causes of homelessness through system and policy change



### STRATEGY 2

Expand homelessness prevention and housing programs to meet the need



### STRATEGY 3

Improve quality of life for unsheltered individuals and create healthy neighborhoods for all

## OUR PROGRESS TO DATE



**17,485**  
People Housed  
2025 goal: 20,000  
People Housed



**5% Decrease in New Households Becoming Homeless in 2024**

### SYSTEM PERFORMANCE



\*includes people served via Covid-related financial assistance

In 2024,



For every **1** household housed



another **1.8** become homeless

## KEY INITIATIVES

### BUILDING MORE PERMANENTLY AFFORDABLE HOUSING

Our community is aligning public resources — like the Measure A housing bond, Housing Authority vouchers and San Jose's Measure E transfer tax — and private funds from partners such as Cisco and Apple, to spur 56 deeply affordable and supportive housing developments.



More than **5,800 homes** are open, under construction or in the pipeline

### PREVENTING HOMELESSNESS

Launched as a pilot seven years ago, a broad public-private partnership has expanded the countywide Homelessness Prevention System to serve more than 2,500 households a year, providing at-risk households with financial assistance and key support services.



**95% of households** remained stably housed while enrolled

### DEPLOYING NEW SHELTER MODELS

Local jurisdictions are embracing new emergency and interim shelter models - like modular developments, tiny homes and hotel conversions - to quickly provide dignified shelter for people on their path to permanent housing. More than 1,000 additional units are in development.



Shelter options have **grown 47%** since 2020

### ENDING FAMILY HOMELESSNESS

In 2021, partners launched the HEADING HOME campaign to end family homelessness. Leveraging federal emergency housing vouchers and other resources, the campaign has enrolled all eligible families with children in a housing program.



More than **2,128 families** connected to permanent housing

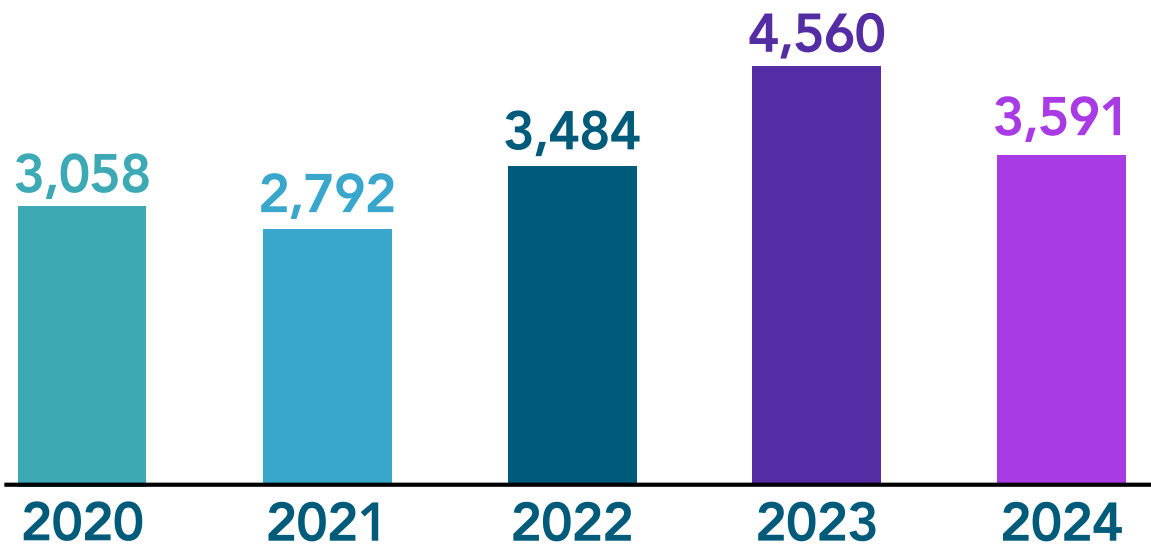
# 2024 YEAR-END PROGRESS REPORT



# 17,485 People Housed

2025 goal: 20,000 People Housed

## PEOPLE HOUSED BY YEAR



## KEY SUBPOPULATIONS



**50%**  
Chronically Homeless\*\*



**27%**  
Families with Children



**13%**  
Young Adults  
(18-24)



**14%**  
Veterans



**9%**  
Seniors  
(65+)



**81%** have  
a San José  
affiliation

\*Based on number of households housed

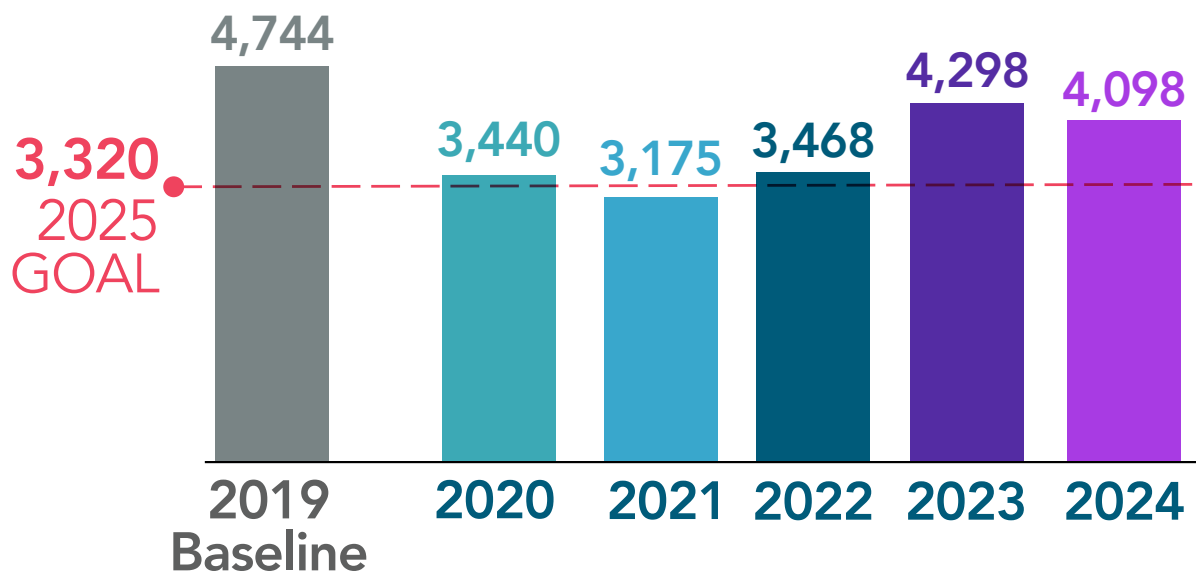
\*\*A person who has experienced homelessness for more than a year and has a disabling condition

# 2024 YEAR-END PROGRESS REPORT



## 5% Decrease in New Households Becoming Homeless in 2024

### NEW HOUSEHOLDS ENTERING HOMELESSNESS BY YEAR



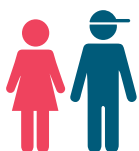
### WHO IS BECOMING HOMELESS?



**21%**  
Families with Children



**6%**  
Seniors (65+)



**16%**  
Young Adults (18-24)



**4%**  
Veterans

# 2024 YEAR-END PROGRESS REPORT

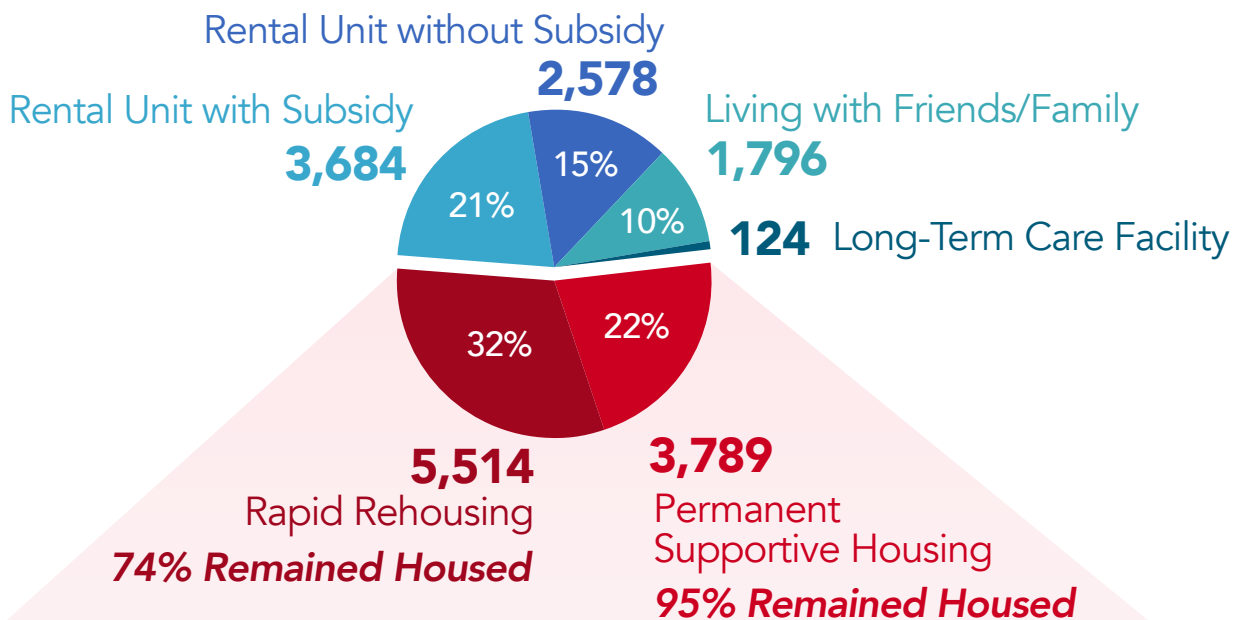


SYSTEM PERFORMANCE

## Permanent Housing

### PEOPLE ASSISTED

# 17,485 People Connected to Stable Housing



### EXPANDING OUR SYSTEM

#### Supportive Housing Capacity\*

5,748 units/subsidies

↑ 15% since Jan. 1, 2020

1,000 units in the pipeline

\*Includes Rapid Rehousing & Permanent Supportive Housing

Data reflects progress from Jan. 1, 2020 - Dec. 31, 2024

# 2024 YEAR-END PROGRESS REPORT



SYSTEM PERFORMANCE

## Temporary Housing & Shelter

PEOPLE ASSISTED

**23,228** People Placed in Temporary Housing & Shelter

EXPANDING OUR SYSTEM

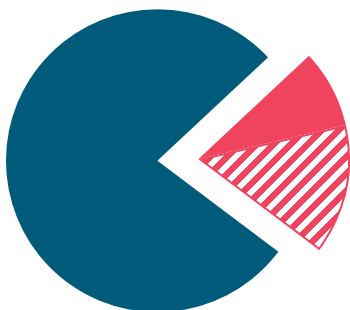
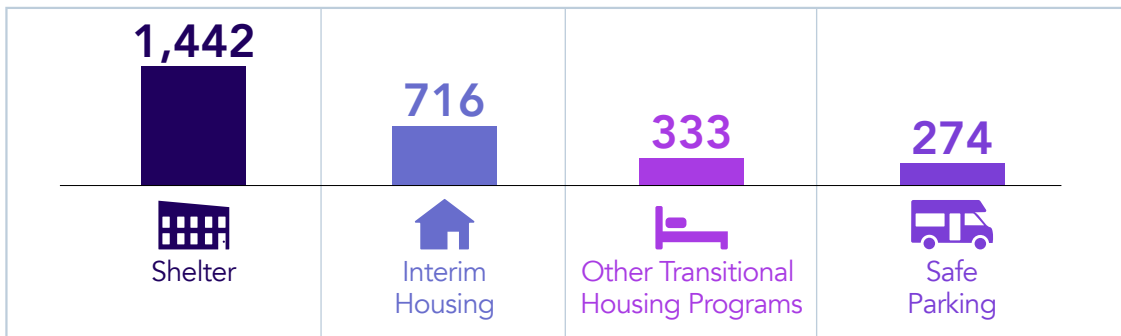
### Temporary Housing & Shelter Capacity

2,765 units

↑47% since Jan. 1, 2020

1,014 units in the pipeline

### Breakdown by Type



In 2024, **22% (1,749)** of all people served in temporary housing and shelter exited to **permanent housing**.

*That means 78% remained in shelter or returned to the street, or another place not meant for habitation.*

**50% (875)** of those who moved into permanent housing did so with the help of **subsidized housing** (rental/own with subsidy).

# 2024 YEAR-END PROGRESS REPORT

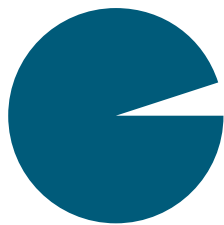


SYSTEM PERFORMANCE

## Homelessness Prevention

### PEOPLE ASSISTED

**33,193** People Received Homelessness Prevention Assistance



**95% of families** remained stably housed while receiving services.



### ONE YEAR LATER



**Only 6% of households** became homeless.

### EXPANDING OUR SYSTEM

#### Homelessness Prevention Capacity

2,547 households

↑ 65% since Jan. 1 2020

Goal to reach **2,500 households**

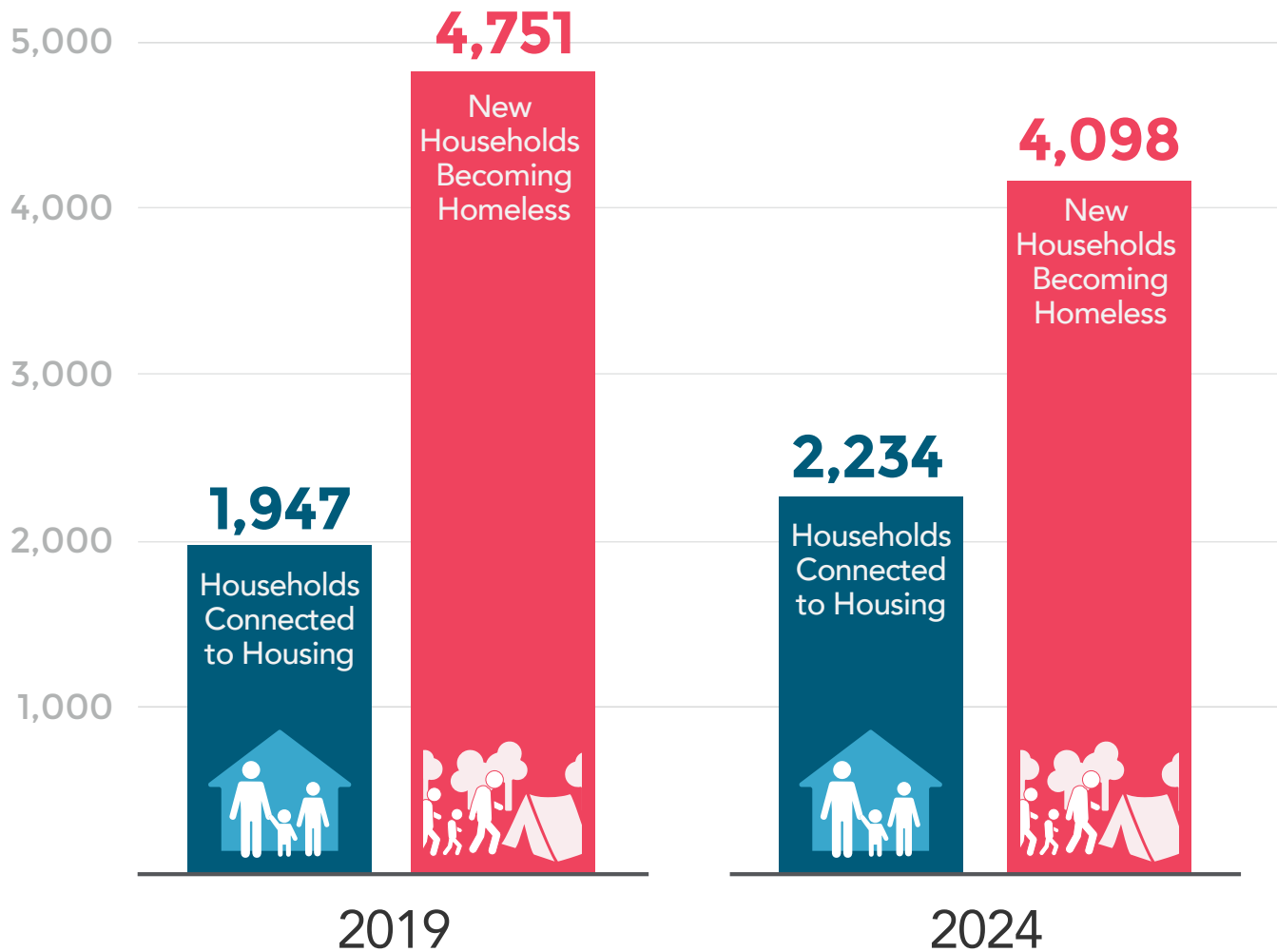
# 2024 YEAR-END PROGRESS REPORT

## Narrowing the Gap to 'Functional Zero'

Households Connected to Housing

vs

New Households Becoming Homeless



For every **1** household housed, another **2.5** became homeless

For every **1** household housed, another **1.8** became homeless