

2025 FINAL PROGRESS REPORT

The systemic factors driving homelessness are stronger than ever, and forcing more of our community members onto the streets and into shelters every day. The 2020-2025 Community Plan to End Homelessness guides our community's collective work to reverse the current growth in homelessness and bring us closer to our goal of ending homelessness in Santa Clara County. We are forging new partnerships, changing systems, and investing strategically to accomplish meaningful progress; however, we must continue to scale up these effective solutions to reduce overall homelessness in our community. To learn more, visit destinationhomesv.org/community-plan

OUR GUIDING STRATEGIES:



STRATEGY 1

Address the root causes of homelessness through system and policy change



STRATEGY 2

Expand homelessness prevention and housing programs to meet the need



STRATEGY 3

Improve quality of life for unsheltered individuals and create healthy neighborhoods for all

OUR PROGRESS



20,830
People Housed since 2020

GOAL ACHIEVED!



19% Decrease in New Households Becoming Homeless since 2019

SYSTEM PERFORMANCE



* Includes all prevention programs in HMIS including Covid and Emergency Rental Assistance programs



IN 2025

For every **1** household housed another **1.9** become homeless

IN 2019

For every **1** household housed another **2.5** become homeless

KEY INITIATIVES

BUILDING MORE PERMANENTLY AFFORDABLE HOUSING

Our community is aligning public resources — like the Measure A housing bond, Housing Authority vouchers and San Jose's Measure E transfer tax — and private funds from partners such as Cisco and Apple, to spur 56 deeply affordable and supportive housing developments.



More than **6,500 homes** are open, under construction or in the pipeline

PREVENTING HOMELESSNESS

Launched as a pilot seven years ago, a broad public-private partnership has expanded the countywide Homelessness Prevention System to serve nearly 2,700 households a year, providing at-risk households with financial assistance and key support services.



93% of households remained stably housed while enrolled

DEPLOYING NEW SHELTER MODELS

Local jurisdictions are embracing new emergency and interim shelter models - like modular developments, tiny homes and hotel conversions - to quickly provide dignified shelter for people on their path to permanent housing. More than 500 additional units are in development.



280 additional units are in development

ENDING FAMILY HOMELESSNESS

In 2021, partners launched the HEADING HOME campaign to end family homelessness. Leveraging federal emergency housing vouchers and other resources, the campaign has enrolled all eligible families with children in a housing program.



More than **2,600 families** connected to permanent housing

2025 FINAL PROGRESS REPORT

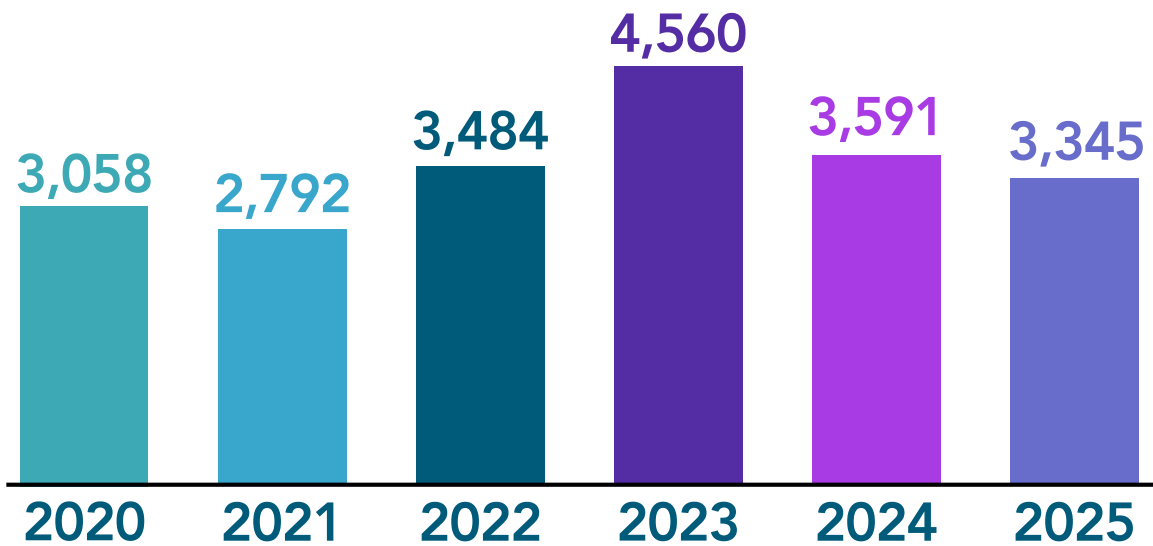


20,830
People Housed

2025 GOAL:
20,000 People Housed

GOAL ACHIEVED!

PEOPLE HOUSED BY YEAR



KEY SUBPOPULATIONS



47%
Chronically Homeless**



26%
Families with Children



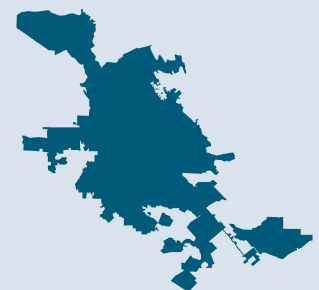
13%
Young Adults (18-24)



15%
Veterans



9%
Seniors (65+)



81% have
a San José
affiliation

*Based on number of households housed

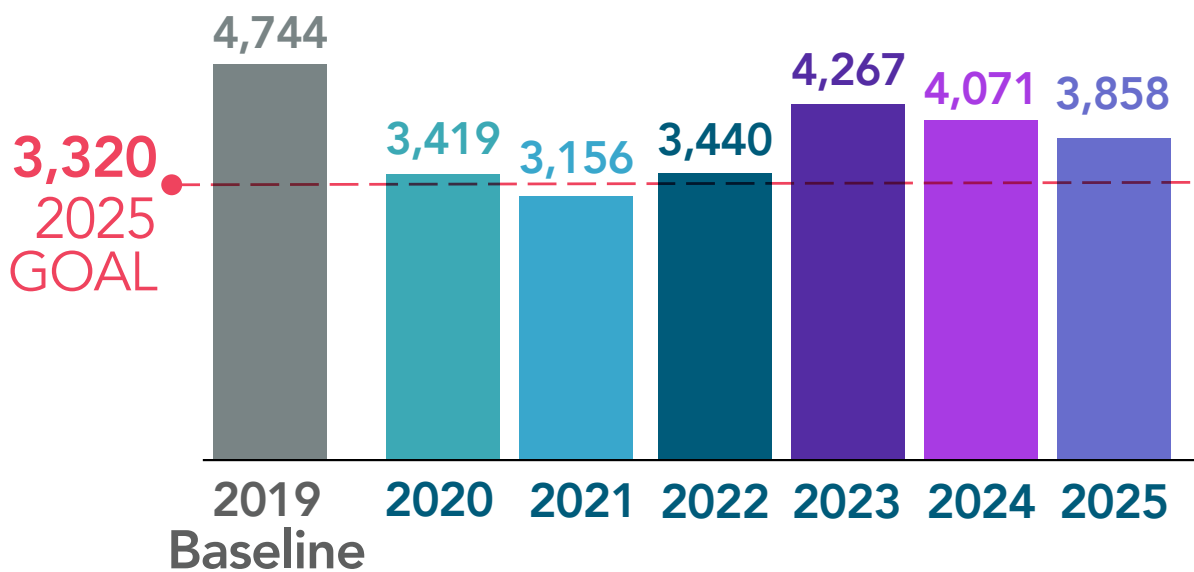
**A person who has experienced homelessness for more than a year and has a disabling condition

2025 FINAL PROGRESS REPORT



19% Decrease in New Households Becoming Homeless since 2019

NEW HOUSEHOLDS ENTERING HOMELESSNESS BY YEAR



WHO IS BECOMING HOMELESS?

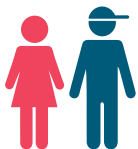
(Completing a Housing Assessment for the First Time in CY25)



18%
Families with Children



7%
Seniors (65+)



17%
Young Adults (18-24)



3%
Veterans

2025 FINAL PROGRESS REPORT

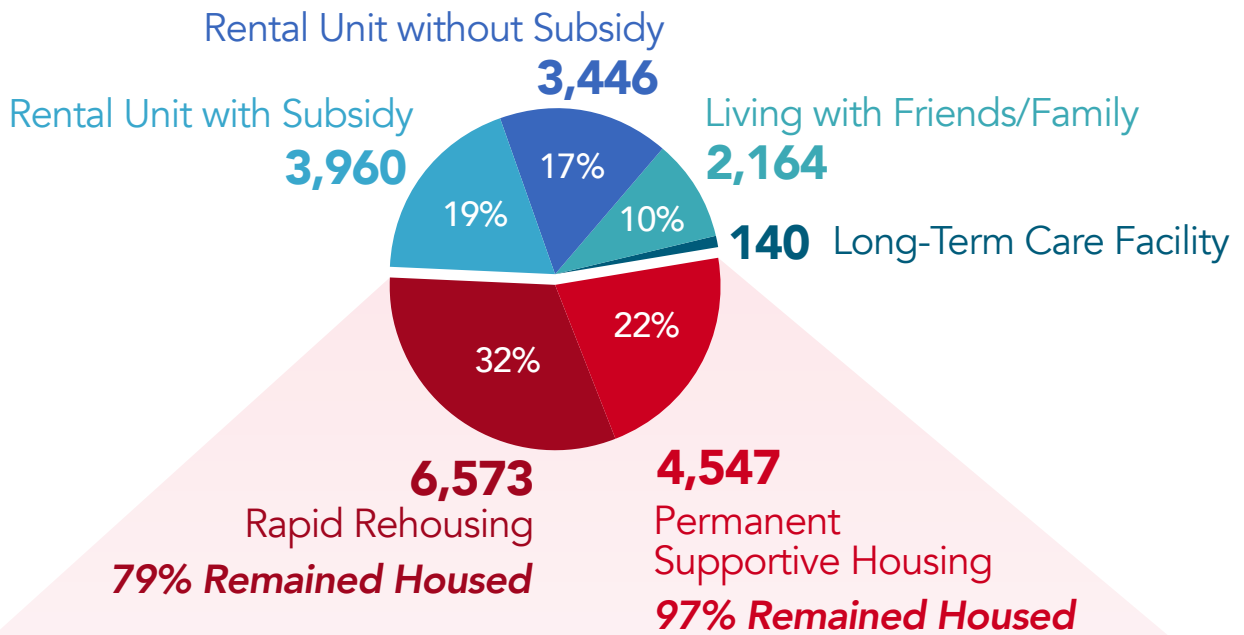


SYSTEM PERFORMANCE

Permanent Housing

PEOPLE ASSISTED

20,830 People Connected to Stable Housing



EXPANDING OUR SYSTEM

Supportive Housing Capacity*

6,400 units/subsidies

↑ 29% since Jan. 1, 2020

1,041 units in the pipeline

*Includes Rapid Rehousing, Permanent Supportive Housing, and Other Permanent Housing

Data reflects progress from Jan. 1, 2020 - Dec. 31, 2025

2025 FINAL PROGRESS REPORT



SYSTEM PERFORMANCE

Temporary Housing & Shelter

PEOPLE ASSISTED

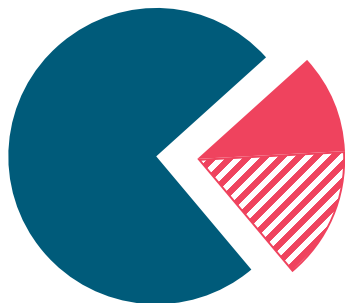
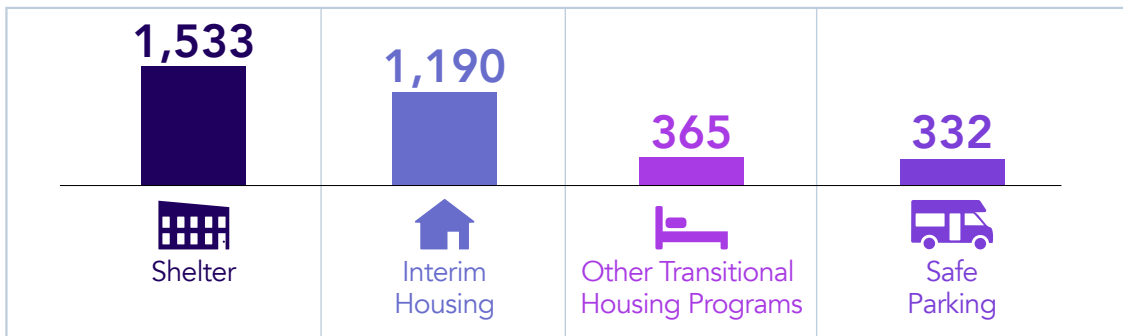
27,037 People Placed in Temporary Housing & Shelter

EXPANDING OUR SYSTEM

Temporary Housing & Shelter Capacity



Breakdown by Type



In 2025, **25% (2,235) of all people (8,834)** served in temporary housing and shelter exited to **permanent housing**. That means 75% remained in shelter or returned to the street, or another place not meant for habitation.

57% (1,277) of those who moved into permanent housing did so with the help of **subsidized housing** (rental/own with subsidy).

2025 FINAL PROGRESS REPORT



SYSTEM PERFORMANCE

Homelessness Prevention

PEOPLE ASSISTED

38,060 People Received Homelessness Prevention Assistance



93% of families remained stably housed while receiving services.



ONE YEAR LATER



Only 5% of households became homeless.

EXPANDING OUR SYSTEM

Homelessness Prevention Capacity

2,693 households

↑ 75% since Jan. 1 2020

2025 GOAL: 2,500 households

GOAL ACHIEVED!

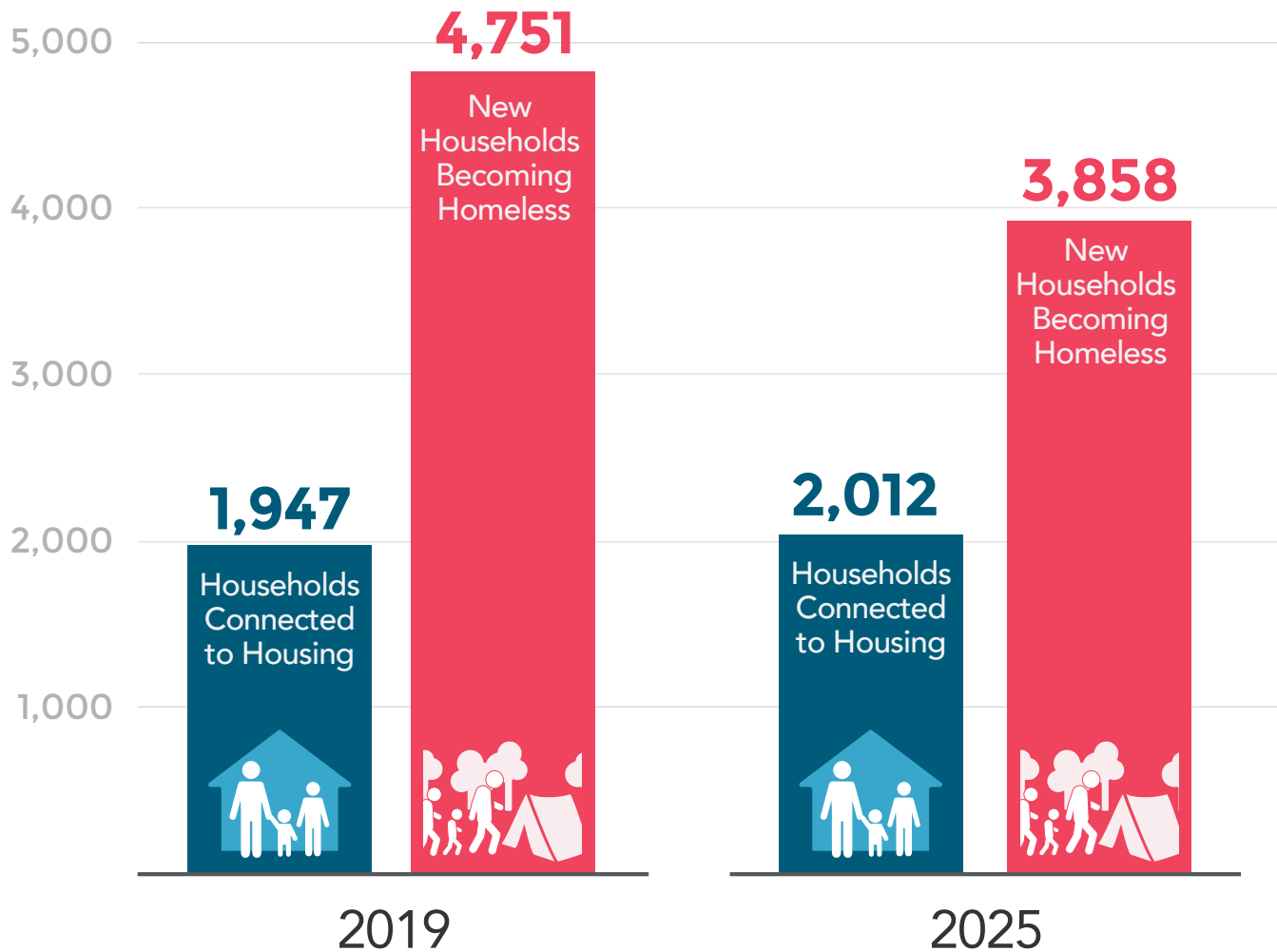
2025 FINAL PROGRESS REPORT

Narrowing the Gap to 'Functional Zero'

Households Connected to Housing

vs

New Households Becoming Homeless



For every **1** household housed, another **2.5** became homeless

For every **1** household housed, another **1.9** became homeless